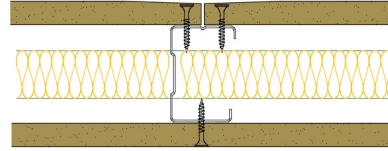


50-B-51(25) - SPEEDLINE System Data Sheet - Version V1 (24-10-23)

SPEEDLINE 50mm 'C' Stud Partition @600mm Ctrs,
with BG Gyproc 12.5mm WallBoard each side,
25mm APR



System Performance Breakdown

Fire Resistance:

BS476 Part 22:1987:

Test Ref & Date or Applied Ref & Report:

Max Height:

Thickness:

Duty Grade: BS 5234: Part 2:1992:

Sound Insulation:

30/30 Minutes (Integrity/Insulation).

BTC 17439F - BRE Report P102396-1011A

Refer to Speedline Specification Clause

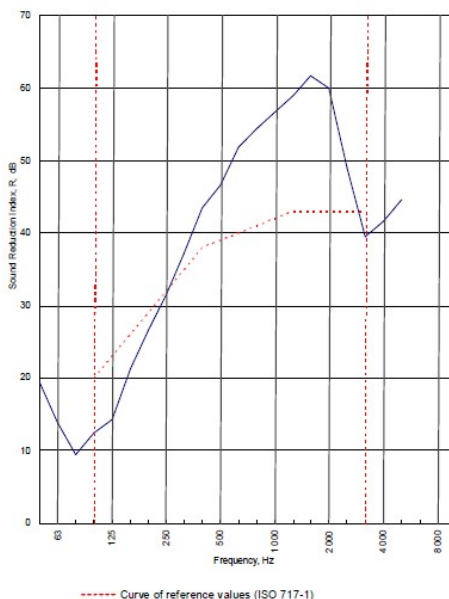
77 mm. (At Base Track, Excluding Finishes)

Medium - Annexes A-F

39 R_w dB, Date Tested or Assessed Against - 11/07/2011

Test Code:
H17472AA
Test Date:
11/07/2011

Freq. Hz	R dB
50	19.5
63	13.9
80	9.4
100	12.4
125	14.3
160	21.3
200	26.7
250	31.4
315	37.2
400	43.4
500	46.6
630	51.9
800	54.4
1000	56.7
1250	58.9
1600	61.7
2000	59.9
2500	49.0
3150	39.4
4000	41.6
5000	44.6
6300	
8000	
10000	



Rating according to BS EN ISO 717-1:1997	R_w (C;Ctr) = 39 (-3;-10) dB
Evaluation based on laboratory measurement results obtained by an engineering method:	Max dev. 8.7 dB at 125 Hz
	$C_{50-2150}$ = -4 dB C_{50-500} = -3 dB $C_{150-500}$ = -2 dB
	$C_{50-2150}$ = -13 dB C_{50-500} = -13 dB $C_{150-500}$ = -10 dB

TESTED AT ONE OF THE UKAS ACCREDITED LABORATORIES BELOW

B.T.C (H-Ref on Graph) 

B.R.E 

AIRO 

S.R.L 

Customer: Metsec plc Hepsec Division



BTC 17472A: Page 9 of 11

SPEEDLINE Drywall Systems, Adsetts House, 16 Europa View, Sheffield Business Park, Sheffield, S9 1XH.

Tel: 0114 231 8030.

Email: enquiries@speedlinedrywall.co.uk

(As per the requirements set out in ISO/IEC 17025:2017 regarding test data the results stated have been carried out by voestalpine Metsec plc as part of the contract to supply Speedline Metal Sections to SIG Plc)